



## SHEET METAL ASSEMBLIES



**FMH Aerospace**

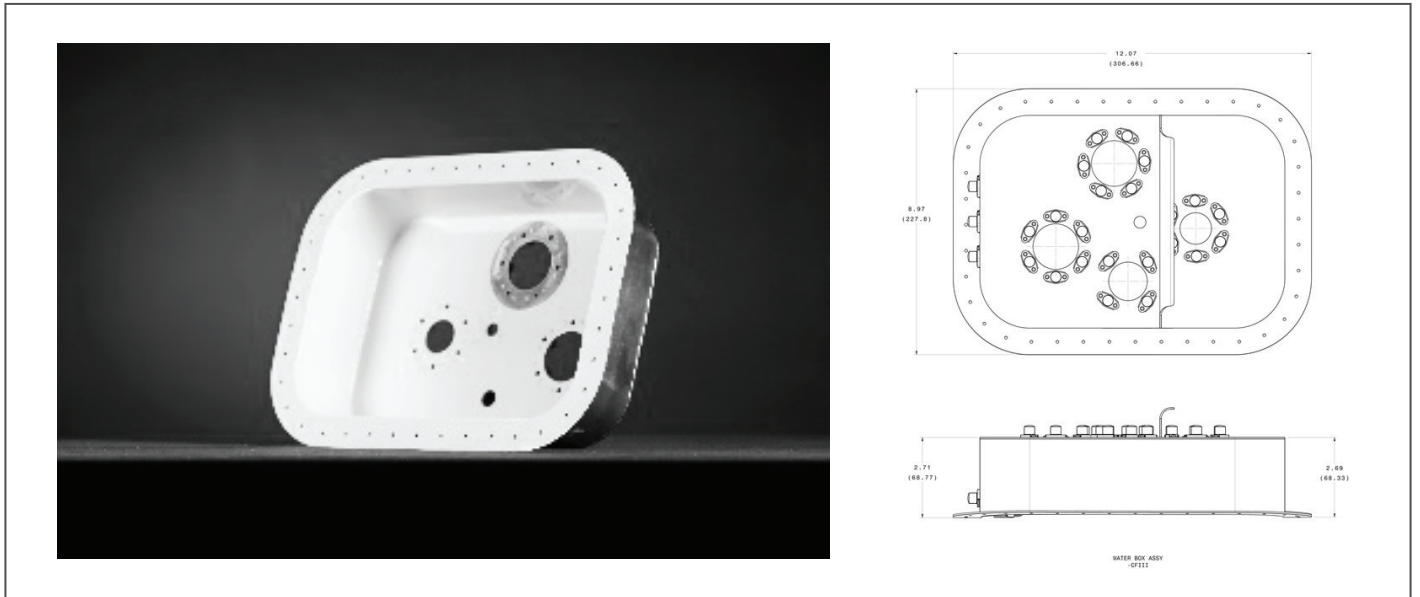
17072 Daimler St.  
Irvine, CA 92614

**Get in touch**

 [Click Here](#)  
[www.fmhaerospace.com](http://www.fmhaerospace.com)

## SHEET METAL ASSEMBLIES

AMETEK FMH manufactures a variety of sheet metal assemblies such as accumulators, light aircraft structural pieces, drain and vent system components, delivery tubes, collector pans and enclosures incorporating tube and duct product. Creative modelling techniques are used to develop solutions to challenging applications and optimize cost and weight. AMETEK FMH's in-house design and manufacturing capabilities - including forming, bending, welding and machining - allow us to meet customer requirements beyond hose, bellow and tube/duct product where needed.



### Application:

Used in various air, fluid and structural applications

- Airframe level: Environmental Control Systems, Fuel, Hydraulic, Vent, Drain, Anti-Icing
- Engine level: Bleed Air, Exhaust, Vent, Drain applications
- System level:
  - Hydraulic Fluid, Fuel, Launch, Anti-Icing, Lubrication, Waste and Water
  - Pressure vessels, Tanks and light structural support

### Construction:

- Fully metallic, from Stainless Steel, Inconel, Titanium or Aluminum
- Rolled and welded, bent, drop hammered and pressure formed
- Temperature ranges from -70 °F to +1,300 °F (-57 °C to +704 °C)
- May be used in conjunction with tubes and ducting

### Features:

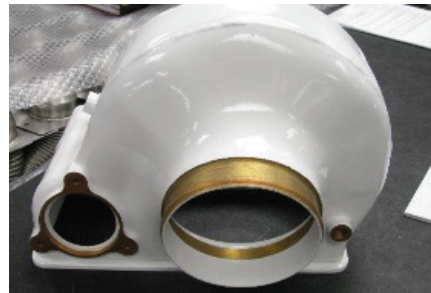
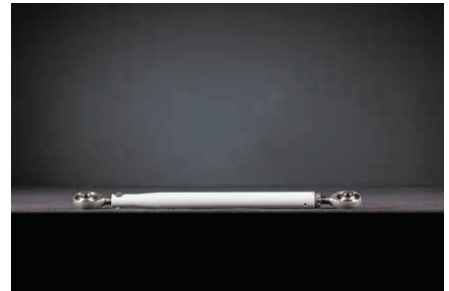
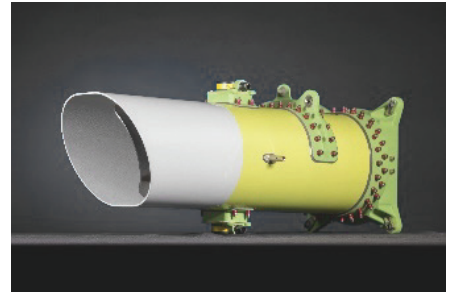
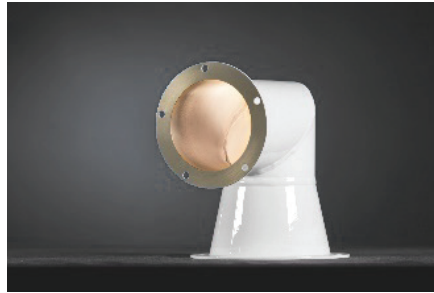
- Custom designed to unique applications, including qualification testing, or built to print

## Performance:

- Pressure ranges up to 5,000 psi in fluid, up to 16,000 psi in air

## Where Used:

- Custom applications used throughout commercial, military and space platforms



- One-stop-shop solving customer challenges
- Optimizing designs for competitiveness
- Manufacturing repeatability through a skilled and adaptive team